

Technical Data Sheet



Detectable Tape (UDT3000 Series)

Issue Date: MAR 2024

APPLICATIONS

Detectable Tape is used for detecting, locating, identifying, and protecting buried utility lines for gas, water, sewer, telecommunication, and electrical markets. The width of tape used, is determined by the size of, and depth at which the underground utility line is buried. The depth at which detectable tape is buried, is determined by the width of the tape used. The aluminum core is detected through means of inductive locating. Buried utility type is identified by the standardized APWA color-code and utility type legend printed on the tape.

KEY BENEFITS

- APWA color code legends.
- Polyester Top Layer Enhances Durability.
- Reverse Printed Polypropylene Structure.
- Acid, Alkali, Chemical, and Oil Resistant.
- Direct Burial Rated.
- Buried Print Style Enhances Long Term Identification.
- Polyextrusion Lamination Maximizes Bond Strength.
- Ink-free Outer Edge Prevents Delamination.

SPECIFICATIONS DETAILS

- Designed as a three-layer sandwich with a layer of foil encased between two layers of plastic.
- Aluminum foil is visible from both sides. Tape is locatable by conductive and inductive methods.
- Acid, alkali and chemical resistant nature prevents degradation.
- Tape identifies, locates and protects utility lines.

PHYSICAL PROPERTIES	U.S. VALUE	METRIC VALUE
Overall Thickness	5 mil (0.005")	0.125 mm
Thickness Foil	0.28 mil (0.00028")	7 microns
Tensile Strength	6100 PSI	42.1 MPa
Elongation (TD)	86% at break	86% at break
Printability	> 40 dynes	> 40 dynes

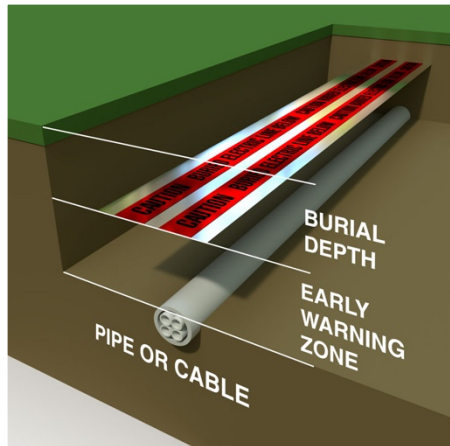
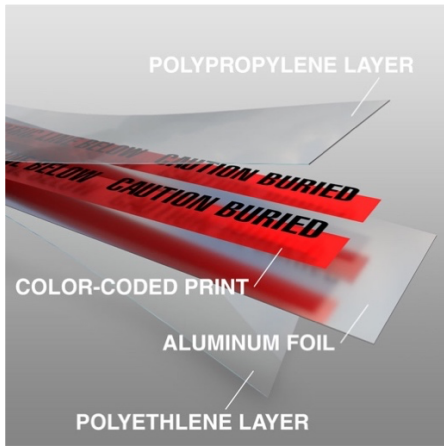
Technical Data Sheet



Detectable Tape (UDT3000 Series)

SIZE (WIDTH)	NOMINAL OVERALL THICKNESS	ALUMINUM FOIL THICKNESS	RECOMMENDED BURIAL DEPTHS FOR DETECTION	PRODUCT WEIGHT PER ROLL	STANDARD PACKAGING
3" x 1,000'	5 mil (0.005")	0.28 mil (0.00028")	8" – 11"	7.0 LBS	4 Rolls / Case
6" x 1,000'	5 mil (0.005")	0.28 mil (0.00028")	14" – 18"	14.0 LBS	2 Rolls / Case
12" x 1,000'	5 mil (0.005")	0.28 mil (0.00028")	18" – 24"	28.0 LBS	1 Roll / Case

Note: 12" detectable tape is a non-stocked item and is available by special order only



Note: While the data contained herein is believed to be reliable averages of the product's properties, the data should not be used for specification purposes. Test Data and results contained in this document are for general guidance only and should not be used by customers to establish designs and specifications. Customers who desire specific performance data should contact INCOM Manufacturing Group for further recommendations.

WARRANTY

The determination of the suitability of this product for any specific use is solely the responsibility of the user. No representations, guarantees or warranties of any kind are made to the accuracy or suitability of information in this document to any specific applications. INCOM warrants its products to be free from defects but limits its obligation to replacement of products that have been proven, to INCOM's satisfaction, to be defective. This warranty is non-transferable and only applies to customers buying directly from INCOM. INCOM is not liable for any loss, damage, expenses, or consequential damages arising in connection with the use of this product.